

Basic Rack PDU

Rack PDU, Basic, 1U, 16A, 208/230V, (12)C13



APC Basic Rack PDU , Input: 230V , Input Connections: IEC-320 C20 , Cord Length: 8.2 feet (2.5 meters) , Output: 208V, 230V , Output Connections: IEC 320 C13

Includes: Installation guide, Rack Mounting brackets



Standard Lead Time: Usually in Stock

AP9565 Features


Vertical mounting capability
Horizontal mounting capability

Basic Rack PDU Features & Benefits

Agility

Rack-Mountable	Includes horizontal, vertical, and toolless-mount varieties. Puts power where it is needed most - in the racks near the equipment.
Single input power source	Supply power from one branch whip to multiple pieces of equipment, conveniently powering rack-mount equipment. Saves time and money during installation by using one branch whip and standard connections.
Wide range of input and output connections	Product family includes a variety of input and output connections to distribute 120V, 208V, or 230V power to multiple outlets. Having a variety of inputs and outputs allow users to adapt to varying power requirements. APC offers units that bring up to 14.4kW using a single branch whip.

Output

Nominal Output Voltage	208V,230V	
Maximum Total Current Draw per Phase	16A	
Output Connections	(12) IEC 320 C13	

Input

Nominal Input Voltage	230V
Input Frequency	50/60 Hz
Input Connections	IEC-320 C20
Cord Length	8.2 feet (2.50 meters)
Number of Power Cords	1
Maximum Input Current per phase	16A
Load Capacity	3680 VA

Physical

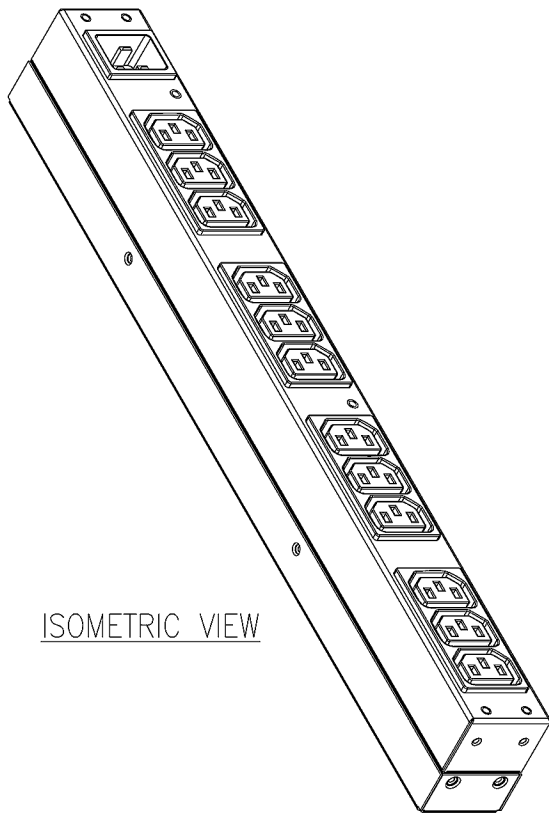
Net Weight	4.50 lbs. (2.05 kg)
Maximum Height	1.75 inches (44 mm)
Maximum Width	17.60 inches (447 mm)
Maximum Depth	2.25 inches (57 mm)
Shipping Weight	8.00 lbs. (3.64 kg)
Shipping Height	2.75 inches (70 mm)
Shipping Width	18.25 inches (464 mm)
Shipping Depth	9.00 inches (229 mm)
Color	Black

Environmental

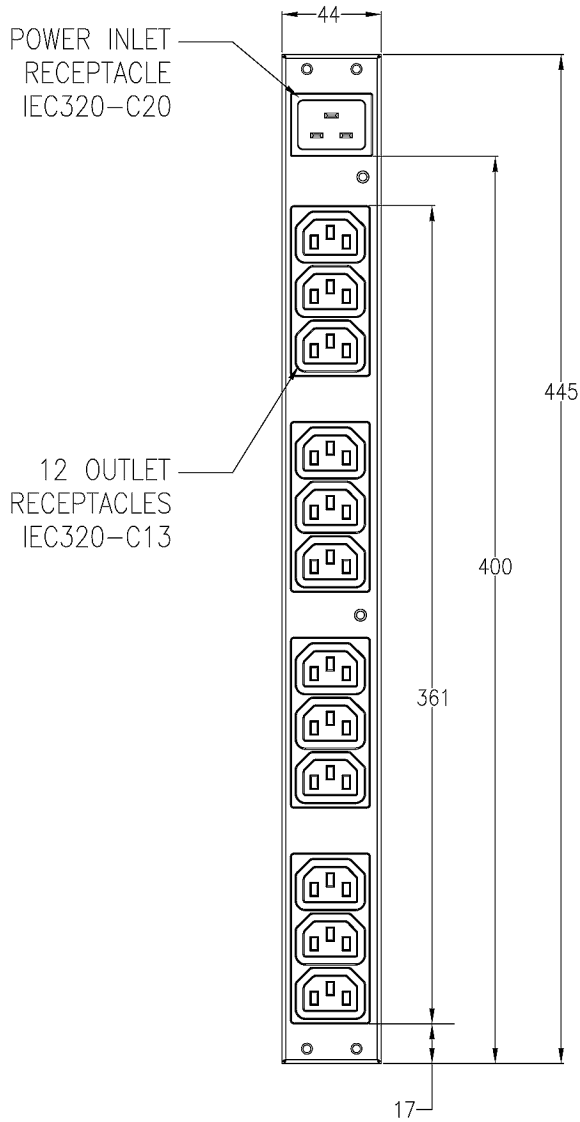
Operating Environment	32 - 113 °F (0 - 45 °C)
Operating Relative Humidity	0%
Operating Elevation	0-10000 feet (0-3000 meters)
Storage Temperature	-13 - 149 °F (-25 - 65 °C)
Storage Relative Humidity	0%
Storage Elevation	0-50000 feet (0-15000 meters)

Conformance

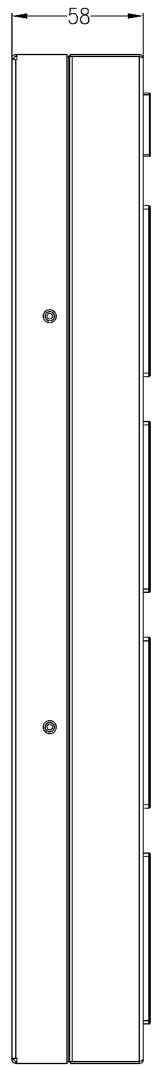
Regulatory Approvals	cUL Listed,CE,CSA,GOST,Queensland Australia,UL 60950,UL Listed,VDE
Standard Warranty	2 years repair or replace
ROHS/WEEE Compliance	RoHS 7b Exemption



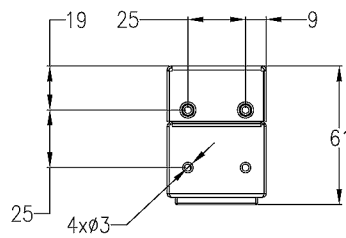
ISOMETRIC VIEW



FRONT VIEW



SIDE VIEW



TOP VIEW

NOTES:

1. ALL DIMENSIONS ARE IN MILLIMETERS.
2. NET WEIGHT IS 2.05 kg.
3. LENGTH OF THE CORD IS 2500 mm.
4. SHIPPED WITH TWO DIFFERENT SETS OF MOUNTING BRACKETS (FOR HORIZONTAL & VERTICAL MOUNTING).
5. INSTALLATION MUST COMPLY WITH ALL APPLICABLE NATIONAL AND LOCAL ELECTRICAL REGULATIONS.

THIS DRAWING AND SPECIFICATIONS HEREIN ARE THE PROPERTY OF AMERICAN POWER CONVERSION AND SHALL NOT BE COPIED, REPRODUCED OR USED IN WHOLE OR IN PART, AS THE BASIS FOR THE MANUFACTURE OR SALE OF ITEMS WITHOUT WRITTEN PERMISSION FROM APC. THIS DRAWING IS BASED UPON LATEST AVAILABLE INFORMATION AND IS SUBJECT TO CHANGE WITHOUT NOTICE.



TITLE:
RACK PDU, BASIC
1U, 16A, 208V/230V, INPUT: IEC320-C20
OUTPUT: (12) IEC320-C13
MAIN MECHANICAL

DWG NO: AP9565

REV. 0

DRAWN: JAYAPRAKASH

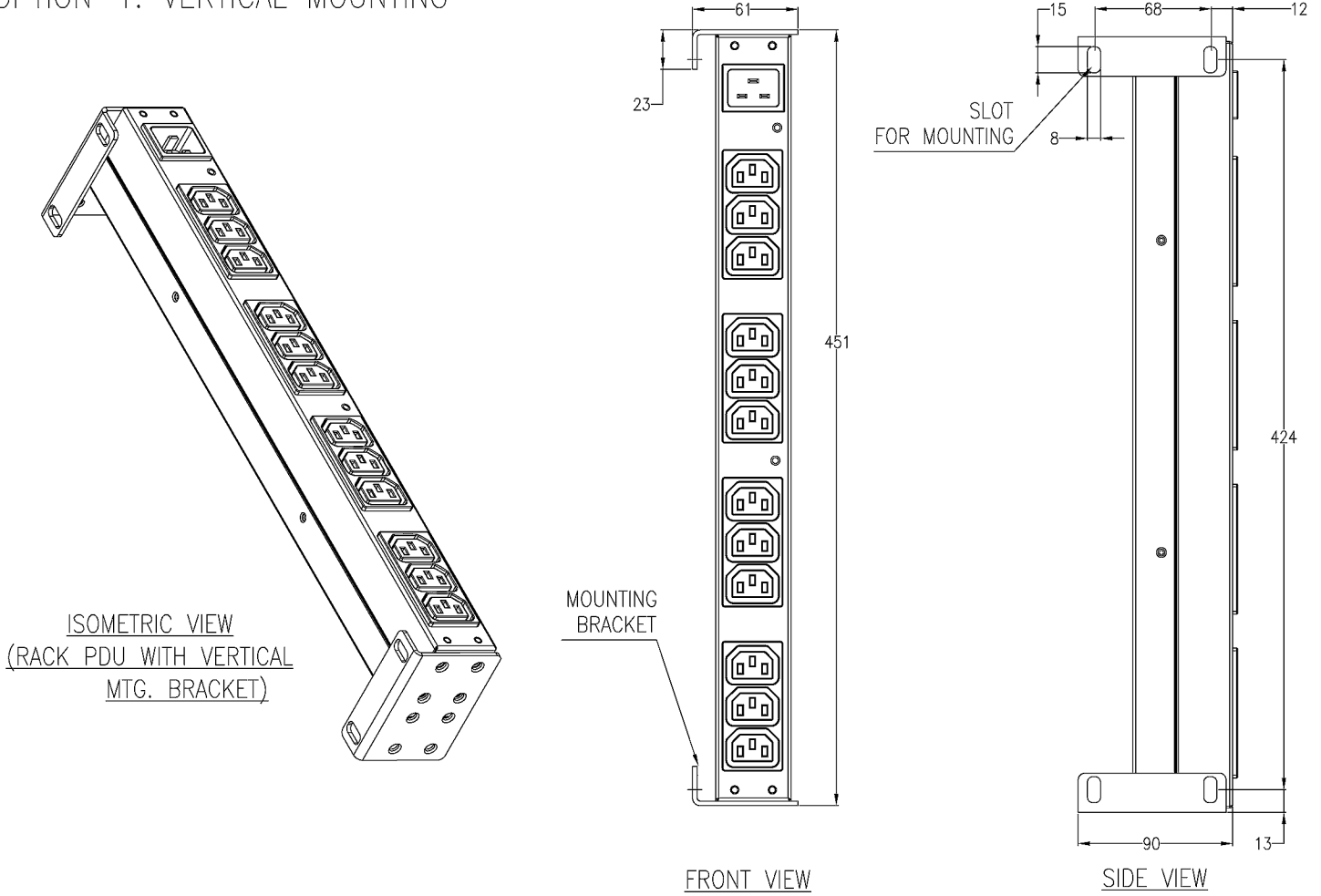
ENGINEER: T.HORSTMANN

APPROVED: C.LARSEN/S.WAGH

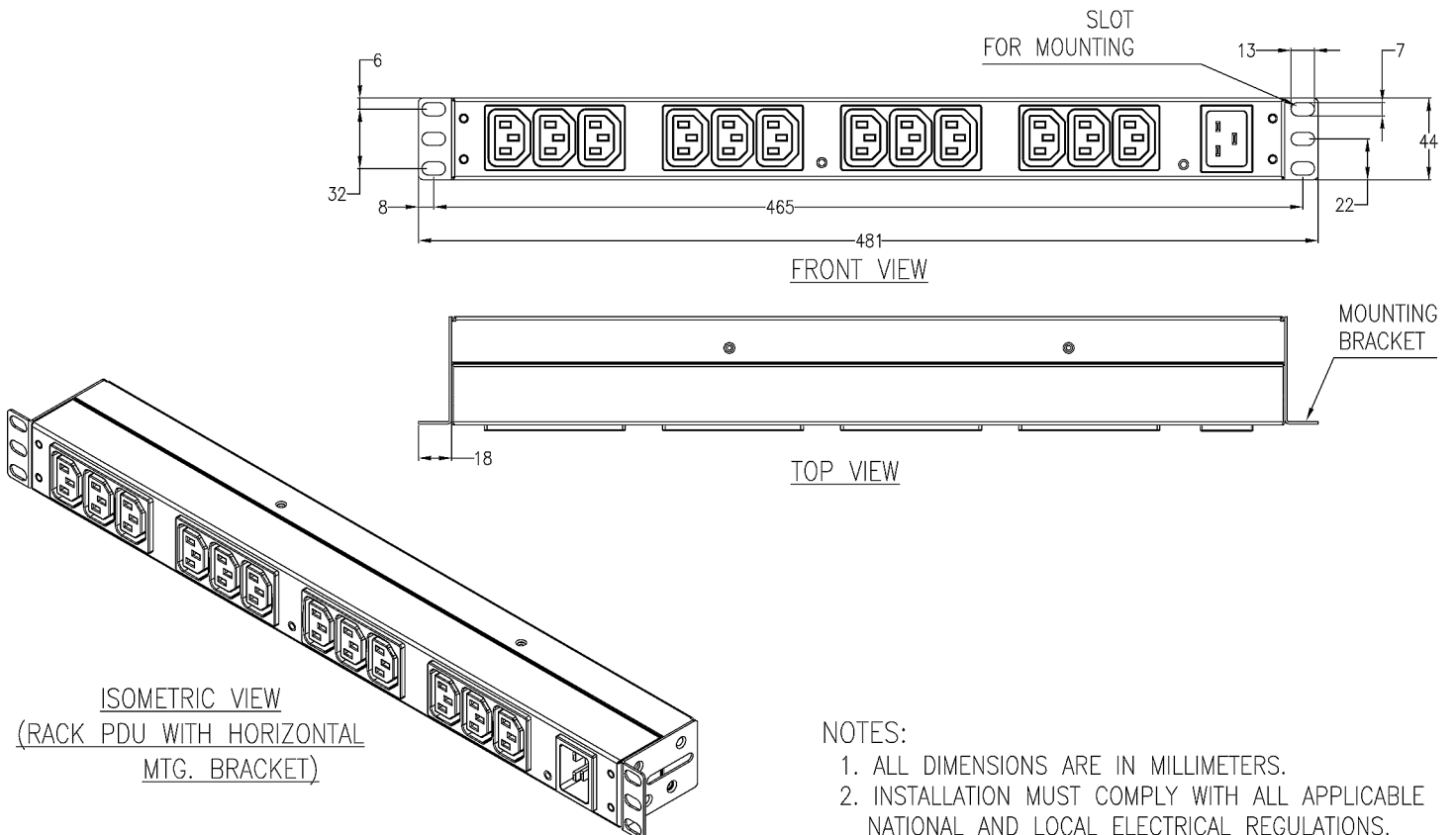
FIRST ANGLE PROJECTION

PROJECT: SUBMITTAL DRAWINGS | SHEET 1 OF 2

OPTION-1: VERTICAL MOUNTING



OPTION-2: HORIZONTAL MOUNTING



THIS DRAWING AND SPECIFICATIONS HEREIN ARE THE PROPERTY OF AMERICAN POWER CONVERSION AND SHALL NOT BE COPIED, REPRODUCED OR USED IN WHOLE OR IN PART, AS THE BASIS FOR THE MANUFACTURE OR SALE OF ITEMS WITHOUT WRITTEN PERMISSION FROM APC. THIS DRAWING IS BASED UPON LATEST AVAILABLE INFORMATION AND IS SUBJECT TO CHANGE WITHOUT NOTICE.

APC

TITLE:
RACK PDU, BASIC
1U, 16A, 208V/230V, INPUT: IEC320-C20
OUTPUT: (12) IEC320-C13
MOUNTING DETAILS

DWG NO: **AP9565**

REV. **0**

DRAWN: JAYAPRAKASH
ENGINEER: T.HORSTMANN
APPROVED: C.LARSEN/S.WAGH

FIRST
ANGLE
PROJECTION

PROJECT: SUBMITTAL DRAWINGS | SHEET 2 OF 2